



[DCA HOME](#) | [ABOUT DCA](#) | [DCA PROGRAMS](#) | [CONTACT DCA](#)



[BCIS Home](#) | [Log In](#) | [User Registration](#) | [Hot Topics](#) | [Submit Surcharge](#) | [Stats & Facts](#) | [Publications](#) | [FBC Staff](#) | [BCIS Site Map](#) | [Links](#) | [Search](#)



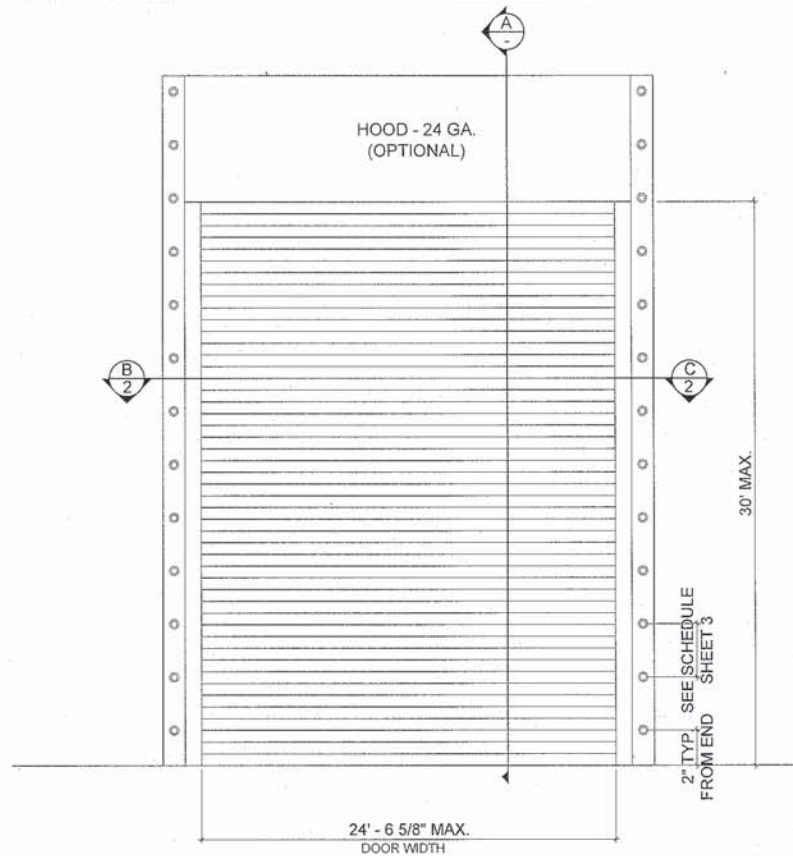
**Product Approval**  
USER: Public User

[Product Approval Menu](#) > [Product or Application Search](#) > [Application List](#) > **Application Detail**

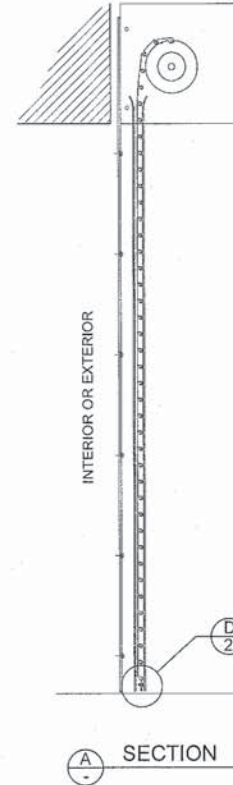
- ▶ COMMUNITY PLANNING
- ▶ HOUSING & COMMUNITY DEVELOPMENT
- ▶ EMERGENCY MANAGEMENT
- ▶ OFFICE OF THE SECRETARY

<p>FL #</p> <p>Application Type</p> <p>Code Version</p> <p>Application Status</p> <p>Comments</p> <p>Archived</p>	<p>FL14141</p> <p>New</p> <p>2007</p> <p>Approved</p> <p><input type="checkbox"/></p>								
<p>Product Manufacturer</p> <p>Address/Phone/Email</p>	<p>Miami Rolling Doors, Corp.</p> <p>497w 28 st.</p> <p>Hialeah, FL 33010</p> <p>(305) 889-0993</p> <p>daviddoor@live.com</p>								
<p>Authorized Signature</p>	<p>Yiping Wang</p> <p>mcy.engineering@att.net</p>								
<p>Technical Representative</p> <p>Address/Phone/Email</p>	<p>David Fuentes</p> <p>497 w 28 st.</p> <p>Hialeah, FL 33010</p> <p>(305) 889-0993</p> <p>daviddoor@live.com</p>								
<p>Quality Assurance Representative</p> <p>Address/Phone/Email</p>									
<p>Category</p> <p>Subcategory</p>	<p>Exterior Doors</p> <p>Roll-Up Exterior Door Assemblies</p>								
<p>Compliance Method</p>	<p>Evaluation Report from a Florida Registered Architect or a Licensed Florida Professional Engineer</p> <p><input checked="" type="checkbox"/> Evaluation Report - Hardcopy Received</p>								
<p>Florida Engineer or Architect Name who developed the Evaluation Report</p> <p>Florida License</p> <p>Quality Assurance Entity</p> <p>Quality Assurance Contract Expiration Date</p> <p>Validated By</p>	<p>Yiping Wang P.E.</p> <p>PE-55983</p> <p>Farabaugh Engineering and Testing, Inc</p> <p>09/29/2012</p> <p>Xiaojun Gu</p> <p><input checked="" type="checkbox"/> Validation Checklist - Hardcopy Received</p>								
<p>Certificate of Independence</p>	<p><a href="#">FL14141_RO_COI_COI.pdf</a></p>								
<p>Referenced Standard and Year (of Standard)</p>	<table border="0"> <thead> <tr> <th style="text-align: left;"><u>Standard</u></th> <th style="text-align: left;"><u>Year</u></th> </tr> </thead> <tbody> <tr> <td>FBC TAS 201</td> <td>2007</td> </tr> <tr> <td>FBC TAS 202</td> <td>2007</td> </tr> <tr> <td>FBC TAS 203</td> <td>2007</td> </tr> </tbody> </table>	<u>Standard</u>	<u>Year</u>	FBC TAS 201	2007	FBC TAS 202	2007	FBC TAS 203	2007
<u>Standard</u>	<u>Year</u>								
FBC TAS 201	2007								
FBC TAS 202	2007								
FBC TAS 203	2007								
<p>Equivalence of Product Standards</p> <p>Certified By</p>									





**TYPICAL ELEVATION**



**SECTION**

<b>DESIGN LOADS</b>
+ 65 PSF
- 65 PSF
<b>STRUCTURAL LOAD</b>
+ 97.5 PSF
- 97.5 PSF

**GENERAL NOTES:**

- THIS PRODUCT HAS BEEN DESIGNED AND TESTED TO COMPLY WITH THE REQUIREMENTS OF THE FLORIDA BUILDING CODE 2007 EDITION. INCLUDED HIGH VELOCITY HURRICANE ZONE (HVHZ).
- THE ROLLING UP DOOR HAVE BEEN TESTED AS PER FBC 2007 TAS 201, 202 AND 203 FOR LARGE MISSILE IMPACT. FORCE ENTRY RESISTANCE TEST PER AAMA 1303.5 IN ACCORDANCE WITH CHAPTER 17 OF THE 2007 FBC.
- DOOR IMPACTED ON BOTH SIDES AND MAY BE INSTALLED ON THE INSIDE OR OUTSIDE OF AN EXTERIOR WALL. THE SLATS MAY BE INSTALLED CONCAVE SIDE FACING OUTSIDE OR INSIDE OF BUILDING.
- DESIGN LOAD SHALL BE DETERMINED BASED ON BASIC WIND SPEED, BUILDING HEIGHT AND WIND ZONE USING APPLICABLE ASCE 7 STANDARD.

- ROLLING DOOR USED FOR AIR AND WATER PENETRATION NOT REQUIRED.
- HOOD TO BE 24 GA. ASTM A653 DESIGNATION G - 90 FINISH TYPE COATING.
- ANCHORS SHALL BE AS LISTED, SPACED AS SHOWN ON DETAILS. ANCHORS EMBEDMENT TO BASE MATERIAL SHALL BE BEYOND WALL DRESSING OR STUCCO.
- ANCHORING OR LOADING CONDITIONS NOT SHOWN IN THESE DETAILS ARE NOT PART OF THIS APPROVAL.
- MATERIALS INCLUDING BUT NOT LIMITED TO STEEL/METAL SCREWS THAT COME INTO CONTACT WITH OTHER DISSIMILAR MATERIALS SHALL MEET THE REQUIREMENTS OF 2004/2007 FLORIDA BUILDING CODE SECTION 2003.8.4.
- IT SHALL BE THE RESPONSIBILITY OF THE CONTRACTOR TO VERIFY THAT THE EXISTING STRUCTURE IS DESIGNED TO SUPPORT  $V_x$  &  $V_y$  FORCES AT BOTH JAMBS.

**LIMITATIONS OF USE**

A- THIS PRODUCT EVALUATION DOCUMENT (P.E.D.) PREPARED BY THIS ENGINEER IS GENERAL IN NATURE AND DOES NOT PROVIDE INFORMATION FOR A SITE SPECIFIC PROJECT. I.E. WHERE THE SITE CONDITIONS DEVIATE FROM THE P.E.D.

B- CONTRACTOR TO BE RESPONSIBLE FOR THE SELECTION, PURCHASE AND INSTALLATION OF THIS PRODUCT BASED ON THIS PRODUCT EVALUATION PROVIDED HEREIN. DOES NOT DEVIATE FROM THE CONDITIONS DETAILED ON THIS DOCUMENT.

C- THIS PRODUCT EVALUATION DOCUMENT WILL BE CONSIDERED INVALID IF ALTERED BY ANY MEANS.

D- SITE SPECIFIC PROJECTS SHALL BE PREPARED BY A FLORIDA REGISTERED ENGINEER OR ARCHITECT WHO WILL BECOME THE ENGINEER OF RECORD (E.O.R.) FOR THE PROJECT AND WHO WILL BE RESPONSIBLE FOR THE PROPER USE OF THE P.E.D. ENGINEER OF RECORD, ACTING AS A DELEGATED ENGINEER TO THE P.E.D. ENGINEER SHALL SUBMIT TO THIS LATTER THE SITE SPECIFIC DRAWINGS FOR REVIEW.

E- THIS P.E.D. SHALL BEAR THE DATE AND ORIGINAL SEAL AND SIGNATURE OF THE PROFESSIONAL ENGINEER OF RECORD THAT PREPARED IT.

HYIPING WANG, P.E.  
 FLORIDA REGISTRATION  
 PE #55983  
 C.A.N. 28877

OCT 27 2010

NO.	DATE	REVISIONS	DESCRIPTION

**MCY ENGINEERING, INC.**  
 GLAZING CONSULTANTS

9110 SW SUNSET DRIVE,  
 MIAMI, FL 33173

P: 305.271.0117  
 F: 786.573.5063

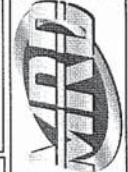
www.MCYEngineering.com  
 MCYEngineering@A1t.net

**MODEL MRD-65 ROLLING DOOR (LMI)**

9125 26TH ST  
 MIAMI, FL 33150

MIAMI ROLLING DOORS, CORP.

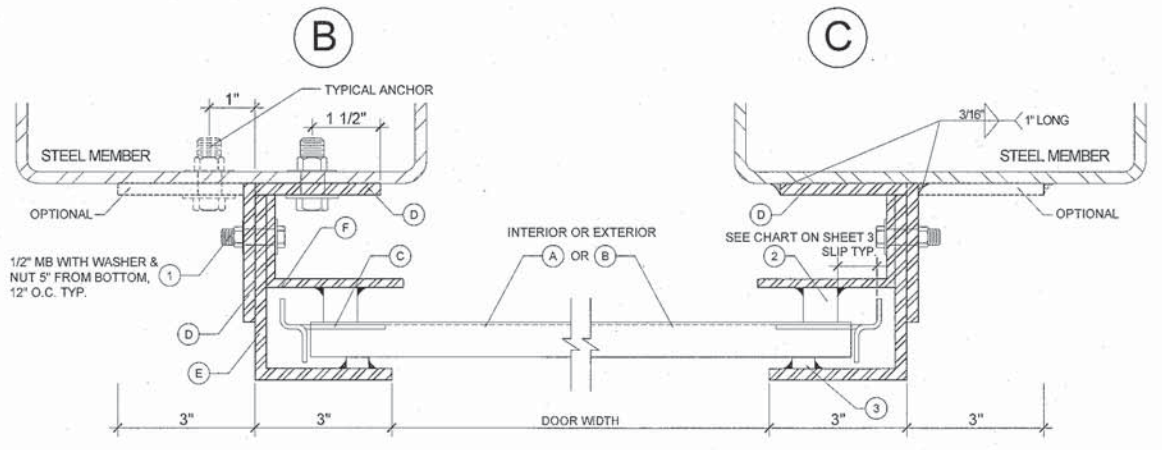
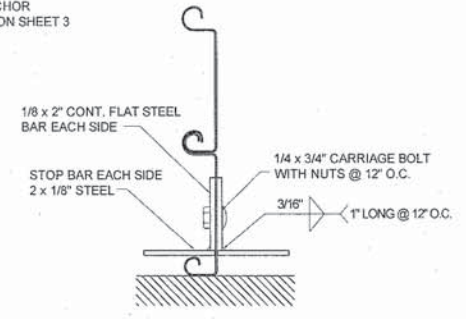
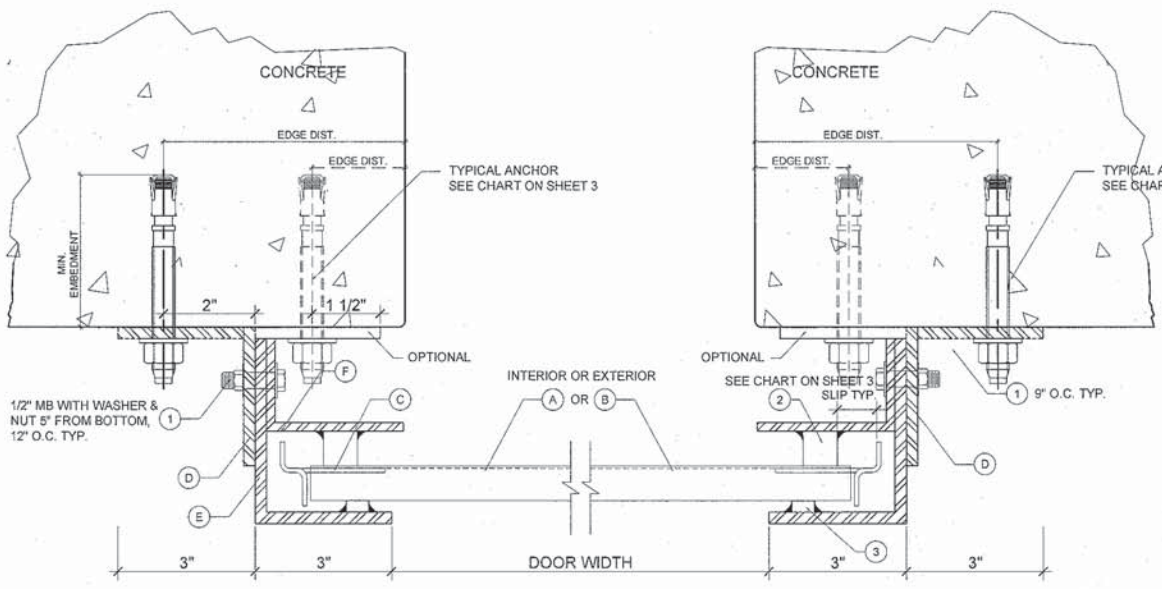
P: (305) 889-0993 F: (305) 698-0984  
 www.miamirollingdoors.com



DATE	09-29-10
SCALE	AS NOTED
DRAWN	S.L.
PROJECT	

DRAWING NO.  
**AD10-34**

SHEET 1 of 4



**D** BOTTOM BAR DETAIL

NO	DATE	REVISIONS	DESCRIPTION

**MCY ENGINEERING, INC.**  
 GLAZING CONSULTANTS  
 9110 SW SUNSET DRIVE, MIAMI, FL 33173  
 P: 305.271.0117 F: 786.573.5063  
 www.MCYEngineering.com MCY.Engineering@AOL.net

**MODEL MRD-65 ROLLING DOOR (LM)**  
**MIAMI ROLLING DOORS, CORP.**  
 497 W 26TH ST. HIALEAH, FL 33010  
 P: (305) 866-0993 F: (305) 698-0984  
 www.miamirollingdoors.com



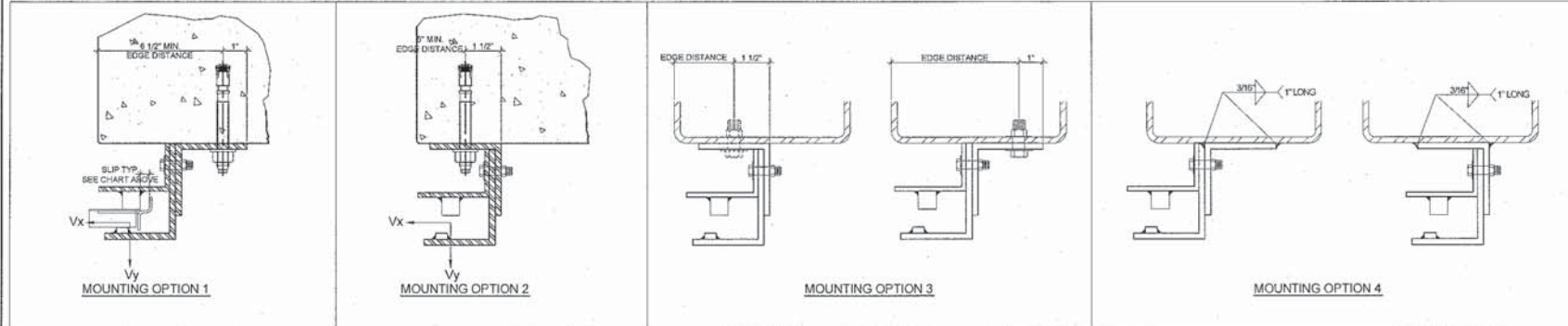
YIPING WANG, P.E.  
 FLORIDA REGISTRATION  
 PE #55983  
 C.A.N. 28677

SEP 30 2010

DATE	09-29-10
SCALE	AS NOTED
DRAWN	S.L.
PROJECT	
DRAWING NO.	AD10-34
SHEET	2 of 4

## ANCHOR SPACING (INCHES)

MAXIMUM DESIGN LOAD (PSF)	DOOR WIDTH (FT)	DESIGN SLIP (IN)	V <sub>x</sub> (LB/FT)	V <sub>y</sub> (LB/FT)	ANCHOR SPACING (INCHES)											
					MOUNTING 1				MOUNTING 2				MOUNTING 3		MOUNTING 4	
					1/2" Ø KWIK BOLT		5/8" Ø KWIK BOLT		1/2" Ø KWIK BOLT		5/8" Ø KWIK BOLT		1/2" MACHINE BOLT GRADE 2	5/8" MACHINE BOLT GRADE 2	3/16 X 1" WELD	
fc' = 6000 PSI	fc' = 4000 PSI	fc' = 6000 PSI	fc' = 4000 PSI	fc' = 6000 PSI	fc' = 4000 PSI	fc' = 6000 PSI	fc' = 4000 PSI									
± 55	9'	0.1	1118	261	8.000	8.000	8.000	8.000	8.000	6.500	8.000	8.000	8.000	8.000	8.000	12.000
	13'	1/2	1668	371	8.000	8.000	8.000	8.000	5.750	4.500	8.000	6.375	6.375	8.000	12.000	
	17'	1/2	1960	481	8.000	7.250	8.000	8.000	4.875	-	7.000	5.375	5.375	7.750	10.250	
	21'	3/4	2293	591	8.000	6.250	8.000	8.000	4.000	-	6.000	4.500	4.500	6.500	8.250	
	24' - 6 5/8"	1	2559	689	7.500	5.500	8.000	8.000	-	-	5.375	4.000	4.000	5.875	7.625	
± 65	9'	0.1	1427	309	8.000	8.000	8.000	8.000	6.500	5.250	8.000	7.500	8.000	8.000	12.000	
	13'	1/2	2007	439	8.000	6.750	8.000	8.000	4.500	-	6.500	5.375	7.000	8.000	10.000	
	17'	1/2	2325	569	7.500	5.750	8.000	7.250	4.000	-	5.500	4.500	6.000	8.000	8.500	
	21'	3/4	2702	699	6.500	4.875	8.000	6.250	-	-	4.750	4.000	5.375	7.500	7.250	
	24' - 6 5/8"	1	3005	814	5.750	4.375	7.000	5.500	-	-	4.250	-	4.375	6.250	6.500	

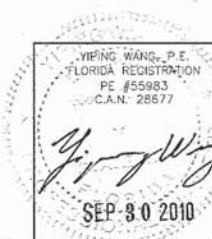


### TYPICAL ANCHORS @ JAMB:

(SEE CHART FOR SPACING)

- TYPE A.** 1/2" DIA. KWIK BOLT 3 ANCHOR BY 'HILTI'  
DIRECTLY INTO fc'=6000 PSI OR fc'=4000 PSI CONCRETE,  
4" MIN EMBED,  
MIN EDGE 6.5" @ MOUNTING 1  
MIN EDGE 5" @ MOUNTING 2
- TYPE B.** 5/8" DIA. KWIK BOLTS BY 'HILTI'  
DIRECTLY INTO fc'=6000 PSI OR fc'=4000 PSI CONCRETE  
5 1/2" MIN. EMBED  
MIN EDGE 6.5" @ MOUNTING 1  
MIN EDGE 5" @ MOUNTING 2

- TYPE C.** 1/2 DIA. MACHINE BOLTS (MIN. GRADE 2 CRS) W/ WASHER & NUTS  
INTO STEEL 1/4" MIN. THICK STEEL : F<sub>y</sub> = 36 KSI MIN.
- TYPE D.** 5/8" DIA. MACHINE BOLTS (MIN. GRADE 2 CRS) W/ WASHER & NUTS  
INTO STEEL 1/4" MIN. THICK STEEL : F<sub>y</sub> = 36 KSI MIN.
- TYPE E.** 3/16" WELDS ELECTRODE E70  
3/16" x 1" WELD AT EACH SIDE OF STEEL ANGLE



REVISIONS	DESCRIPTION
NO. DATE	

**M C E**

**MCY ENGINEERING, INC.**  
GLAZING CONSULTANTS  
P. 305.271.0117  
MIAMI, FL. 33173  
F. 786.573.5063  
www.MCYEngineering.com    MCY.Engineering@Att.net

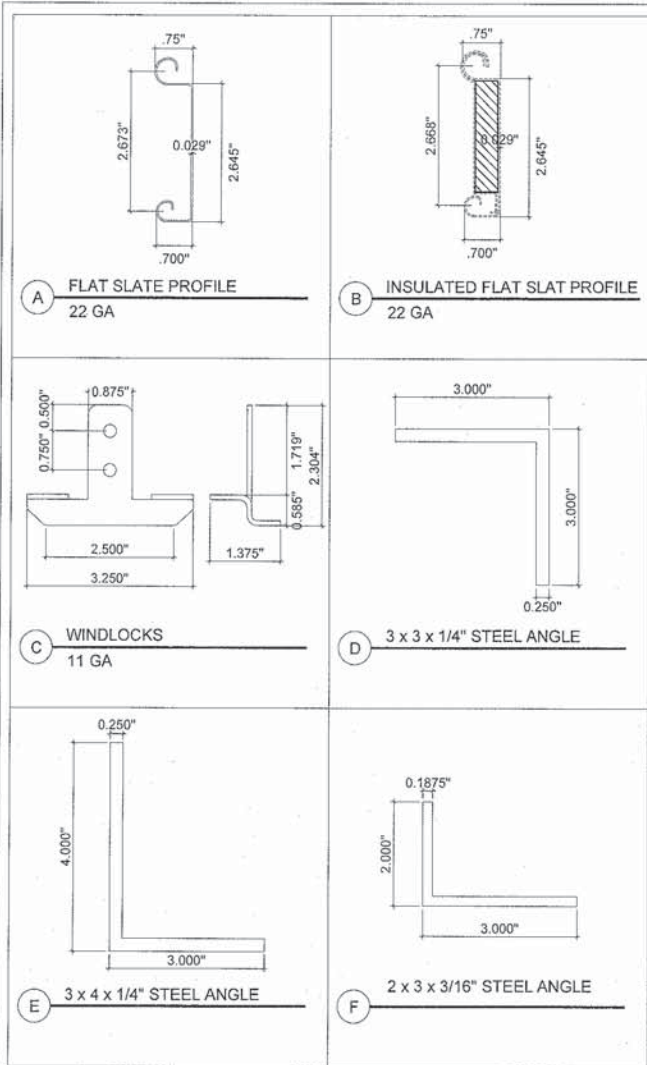
---

**MODEL MRD-65 ROLLING DOOR (LMI)**  
**MIAMI ROLLING DOORS, CORP.**  
497 W. 28TH ST.  
HALEAH, FL. 33010  
P. (305) 889-0993 F. (305) 898-0984  
www.miamitollingdoors.com

---

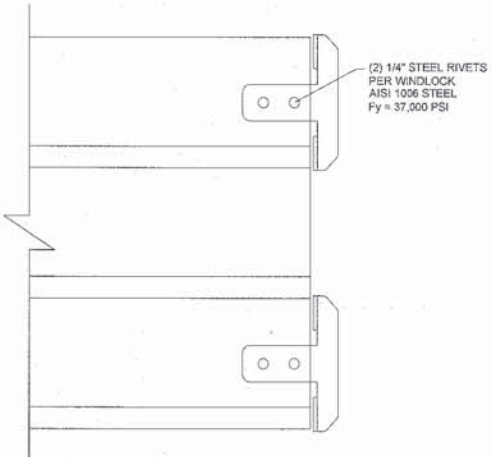
**MRD**

DATE	09-29-10
SCALE	AS NOTED
DRAWN	S.L.
PROJECT	
DRAWING NO.	AD10-34
SHEET	3 of 4



### BILL OF MATERIALS

ITEM #	QTY.	DESCRIPTION	MATERIAL	MANUFACTURER/REMARKS
A	AS REQD	22GA (0.029") FLAT SLAT	GALVANIZED STEEL OR STAINLESS STEEL	ASTM A653 Fy = 50 KSI OR STAINLESS STEEL AISI 304 Fy = 50KSI . MIAMI ROLLING DOORS, CORP
B	AS REQD	INSULATED FLAT SLAT	EXPANDED POLYSTYRENE	OPTIONAL NOA 07 - 1107.08 IF NEEDED FOR INSULATION OR FIRE PROTECTION PURPOSES
C	2 PER SLAT	11 GA WINDLOCKS	PLATED STEEL	ASTM A36 MIN. MIAMI ROLLING DOORS, CORP.
D	2 PER FRAME	3 x 3 x 1/4" STEEL ANGLE	STEEL	ASTM A36 MIN.
E	2 PER FRAME	3 x 4 x 1/4" STEEL ANGLE	STEEL	ASTM A36 MIN.
F	2 PER FRAME	2 x 3 x 3/16" STEEL ANGLE	STEEL	ASTM A36 MIN.
1	AS REQD.	1/2" x 1 1/2" ASSEMBLY BOLT	STEEL SAE GRADE 2 MIN.	5" FROM BOTTOM AND 12" O.C.
2	AS REQD.	3/4" x 3/4" CONTINUOUS SOLID STEEL WINDBAR	STEEL ASTM A36 MIN.	3/16" x 1" WELDED TO TRACK EACH SIDE @ 12 O.C.
3	AS REQD.	1/2" x 1/4" CONTINUOUS SOLID STEEL WINDBAR	STEEL ASTM A36 MIN.	3/16" x 1" WELDED TO TRACK EACH SIDE @ 12 O.C.



**INTERLOCKING SLATS W/ WINDLOCKS**  
@ EVERY OTHER SLAT

YIPING WANG, P.E.  
FLORIDA REGISTRATION  
#55993  
C.A.N. 28677

*Yip Wang*  
OCT 27 2010

REVISIONS	DESCRIPTION
NO DATE	

**MCY ENGINEERING, INC.**  
GLAZING CONSULTANTS

9110 SW SUNSET DRIVE  
MIAMI, FL 33173  
www.MCYEngineering.com

F: 305.271.0117  
F: 786.573.5063  
www.MCYEngineering.com

**MODEL MRD-65 ROLLING DOOR (LMI)**  
**MIAMI ROLLING DOORS, CORP.**

467 W 26TH ST  
MIAMI, FL 33135  
P: (305) 868-0693 F: (305) 868-0694  
www.miamirollingdoors.com



DATE	09-29-10
SCALE	AS NOTED
DRAWN	S.L.
PROJECT	
DRAWING NO.	AD10-34
SHEET	4 of 4